

**POLICIES AND APPROVED CONSERVATION PRACTICES
FOR
HONEY CREEK WATERSHED
319 NON POINT SOURCE POLLUTION
COST-SHARE PROJECT**

FY 2006 319 (h) Project 9, Output 9.3.1
#C9-996100-13
Honey Creek Watershed Implementation Project

Beginning July 1, 2006
Ending September 30, 2010

Developed by:

Oklahoma Conservation Commission

In Cooperation with:

***Delaware County Conservation District
Natural Resource Conservation Service
Honey Creek Watershed Advisory Group***

Oklahoma Conservation Commission

Guidelines

For The

Honey Creek Watershed

319 Non Point Source Cost-Share Project

Program Years 1-4 and Approved Practices

I. General

The Oklahoma Conservation Commission hereby declares that the following problems are having a detrimental effect on the state's water resources in the Honey Creek watershed. The Honey Creek watershed is on the Oklahoma 2002 Integrated Report Category V list, and the 2002 OWRB BUMP report stated that Grand Lake is impaired by turbidity and that TSI for chlorophyll-a indicates that the lake is hypereutrophic. In addition, areas of Grand Lake fail the dissolved oxygen criterion.

Oklahoma's water resources are an important foundation of the state's economic infrastructure. Natural climatic events as well as human activity are impacting the state's water resources. As long as farmers and ranchers produce food from the land to feed the world and rain falls, we will continue to see impacts on the state's water. Our task as stewards of the natural resources, is to minimize these impacts. Protecting these vital natural resources is paramount in preserving the state's economic future. In order to accomplish this goal, the Commission hereby establishes the following objectives to address these problems affecting our renewable natural resources:

1) Make cost-share funds available to conservation districts so they can implement cost-share practices, which will protect our natural resource of water; 2) provide promotional, planning, and technical assistance to districts to facilitate the implementation of best management practices.

The Conservation Commission herein establishes the complete list and description of the Conservation Cost-Share Program policies and conservation practices recommended by the Honey Creek Advisory Group (WAG). These policies and practices were approved by the Delaware County Conservation District for use during this four (4) year program (see section II for the approved list of conservation practices). Cost-share rates (unit cost) will be based on the Oklahoma Natural Resources Conservation Service (NRCS) state average unit cost. These unit costs will be updated annually. When a project agreement (contract) has been developed with an applicant, unit cost to be used will be the unit cost in effect at the time the practice is completed. Any variances in the best management practices must be recommended by the Watershed Advisory Group, approved by the conservation district and the Oklahoma Conservation Commission Water Quality Director. These variances must be approved prior to performance agreements being signed.

Allocation of Funds:

To date, the Legislature has appropriated \$125,000 of the Priority Watershed Conservation Cost-Share Funds for the purpose of matching federal 319 funds. Additional funds (\$305,687) should be allocated in State FY 2008 and subsequent years.

State Funds	Budgeted	\$430,687
State Funds	FY2007 Appropriated	\$125,000
State Funds	Still needed in order to utilize all 319(h) funds.	\$305,687
Federal Funds	Budgeted	\$463,592
Landowner Contribution	Budgeted	\$223,570
Total Project Implementation	Budgeted	\$1,117,849

The funds for the project will become available at various times during the life of the program. The project will have \$312,500 available at the time of the first sign up period. This includes \$125,000 of state money (FY 2007) and \$187,500 of federal money. Landowner contributions are not included in this total.

Targeting:

The Conservation Commission Water Quality Staff, with the concurrence of the Environmental Protection Agency, has designated the following means to be used for targeting methodology: (1) utilization of remotely-sensed and electronically mapped data; (2) on site assessments with the aid of aerial photographs, soil surveys, and (3) the use of a priority ranking system similar to the one used by NRCS for the EQIP program. Those individuals desiring to participate in the program will receive a preliminary site visit from our conservation plan writer. The Plan Writer will do a preliminary investigation as to the extent to which the particular landowner contributes to the water quality problems in the watershed and assign a ranking index based on the practices that would need to be implemented, the cost for implementation, and the expected impact on water quality improvement. A concerted effort will be made to identify the areas that are contributing the larger amounts of sediment and nutrients such that the remediation cost per unit mass of pollutant is minimized.

Upon receipt of the targeting map (Figure 1; output 9.1.1), a Priority Ranking System was developed, based on the following criteria:

- High, Medium and Low Potential Phosphorus Loss as identified on the Target Map;
- Usage of a Comprehensive Nutrient Management Plan;
- Distance from a confined livestock facility to a USGS Blue Line stream or other water body;
- Topography between a confined livestock facility to a USGS Blue Line stream or other water body;
- Development of filter strips;
- Percentage of grazing lands planned for Prescribed Grazing;
- Improvement of grazing distribution;

- Number of pastures to be utilized for rotational grazing; and,
- Replacement of existing septic systems.

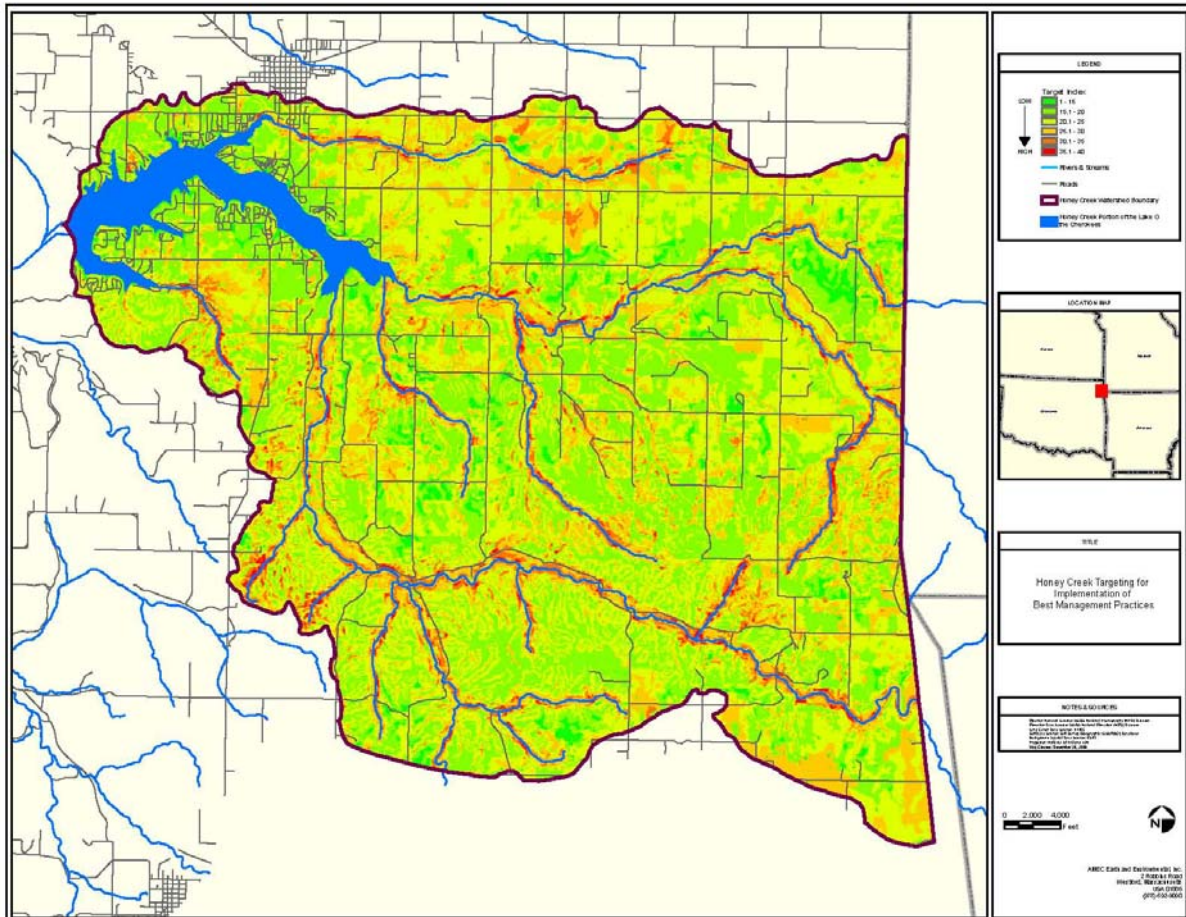


Figure 1. Targeted areas in the Honey Creek watershed.

Sign Up:

The Project Coordinator worked with the Delaware County Appraiser's office to obtain a listing of all landowners in the Honey Creek watershed. Due to the large number of landowners with small acreage, a mailing list was developed for landowners with twenty or more acres. That list was utilized for mailing notice of the public meeting held January 9, 2007 and for inclusion in the monthly issues of *The Delaware County Conservation District Newsletter*.

A three week initial sign up period was established, with concurrence of the participating conservation district and the Watershed Advisory Group, for taking applications for cost-share assistance. Applications were taken at the district office using the CC/FCR Cost-Share Application Form and at a public meeting to be held as soon as possible after receipt of the targeting report and maps. After the prospective cooperator signs up, the conservation planners will contact each applicant and: (1) determine eligibility; (2) set priority ranking (using the priority ranking form); (3) develop a conservation plan to determine needs; (4) with applicant's concurrence, a project agreement will be developed in accordance with the Oklahoma Conservation Commission Cost-Share Program (refer to OCC State Guidelines for Program Year

8); (5) the completed conservation plan and project agreement will be presented for approval to the Delaware County Conservation District ; (6) the final approval will be authorized by the designated OCC representative. The Watershed Advisory Group will be updated on plans and agreements at scheduled meetings. **NOTE: Absolutely no work will begin on any project until the OCC staff representative has approved the plan and project agreement as so indicated by his/her signature on the agreement form.**

Personal contacts have been made by the project coordinator, Watershed Advisory Group members, Delaware County Conservation District board members, and NRCS personnel. Personal contacts will continue to be made with landowners who have not responded to written notification of the project. Contacts will be made to the non-responsive landowners in the highest targeted areas first, then each succeeding targeted areas from high to low. As of mid-August, 2007, 245 acres have been included in total exclusion BMPs.

As funds become available after the initial sign up period and planning has been completed, additional sign up periods can be conducted as determined by the conservation district and the OCC staff representative. At regular intervals a review/audit of the program will be made by the OCC water quality representative. This will be used to determine compliance with the program objectives and if modifications are necessary. The distribution of funds will be re-evaluated as more funds become available. In the event that adjustments are needed, the OCC Water Quality Staff Representative will make the needed adjustments with approval of the Delaware County Conservation District Board.

Eligibility Criteria:

The following criteria must be satisfied for an applicant to participate in the Honey Creek Priority Watershed Cost-Share Program: (1) must own or operate land in the Honey Creek Watershed in Delaware County; (2) must have a need for one of the Priority Best Management Practices; (3) if it is determined that the applicant requires a priority practice, he/she must be willing, with cost-share assistance, to install the needed BMPs; (4) the applicant will be required to maintain the BMP for the life of the practice as specified by NRCS.

All agriculture producers and individual rural residents in the Honey Creek Watershed in Delaware County are eligible to receive cost-share assistance regardless of size of land ownership. There will be no minimum cost-share payment to any applicant. The Honey Creek Watershed Advisory Group has installed a cap for the maximum cost-share assistance to any one participant. The cap has been set at \$25,000 for the first sign up period. If this is deemed too small to meet the water quality needs for the watershed, the Conservation District Board will review this matter and approve any variances.

Conservation Commissioners, Conservation Commission Staff, Conservation District Employees, or the spouses of any of these individuals shall not be eligible to participate in the Conservation 319 Cost-Share Program. Conservation district directors and members of the Watershed Advisory Group are eligible and encouraged to participate in the Honey Creek Watershed Cost-Share Program. If district directors choose to participate, the following OCC policy will apply: in order to provide for an impartial legal majority, no more than two district directors from the Delaware County Conservation District shall participate in the cost share program for the Honey Creek Priority Watershed and 319 Non-Point Source Pollution Program.

In addition, the directors who desire to apply for the cost share program shall refrain from discussing or voting on any items or issues pertaining to the cost share program. This includes rates, practices, maximum payment, and applicants for the program.

Contract Compliance:

The Oklahoma Conservation Commission Water Quality Staff, with the concurrence of the Honey Creek Watershed Advisory Group and approved by the aforementioned conservation district and Oklahoma Conservation Commission, have developed standard forms for the following: (1) CC/HC Project Cost-Share Assistance Pre-Application Form; (2) CC/HC Project Priority Ranking System; (3) CC/FCR Cost-Share Evaluation Form.

The cooperator will be required to sign a project agreement with the Delaware County Conservation District and follow a specified schedule of operations. The schedule of operations form details a year by year plan of the Best Management Practices (BMPs) to be installed and a time frame within which to install them. The project coordinator will conduct annual status reviews on the anniversary of the signing of the Performance Agreement. If a cooperator is found to be out of compliance with the schedule of operations due to circumstances beyond their control, a revision schedule can be discussed and completed. These revisions will not require conservation district board approval. In the event a cooperator is not in compliance due to lack of interest the district board has the discretion to terminate the contract. The idle funds can then be utilized by another cooperator. The importance of the cooperators keeping on schedule must be stressed by the planner. The four year lifespan of the project dictates the need for schedule compliance. All funds for BMP installation must be expended by September 30, 2010.

II. List of Recommended Conservation Practices and Cost-Share Rates

Contained in this section is a master list of Best Management Practices (BMP), cost-share rates, and component parts for each BMP that has been recommended for implementation in the Honey Creek Watershed Project. The Honey Creek Watershed Advisory Group convened on September 26, 2006 and approved the following list of Priority and Best Management Practices for recommendation to the Commission Members. The BMPs have been approved by the Delaware Conservation District Board and the Oklahoma Conservation Commission.

	<u>Cost-Share Practices</u>	<u>Cost-Share Rate</u>
Priority #1	Riparian Area Establishment and Management	
	Components:	
	(1) Incentive payments	100%
	(2) Off-site watering	80%
Priority #2	Buffer Strip Establishment and Streambank Protection	
	Components:	
	(1) Incentive payments	100%
	(2) Fencing	80%
	(3) Vegetative planting	80%
	(4) Critical area improvements	80%
	(5) Special BMPs, as determined by OCC representatives	

Priority #3	Animal Waste Components:	(1) Composter	75%
		(2) Composter with dry waste storage	75%
		(3) Cake out storage	75%
		(4) Full clean out storage	75%
		(5) Waste storage/animal feeding structure	60%
Priority #4	Pasture Establishment and Management Components:	(1) Vegetative establishment	80%
		(2) Cross fencing	80%
		(3) Watering facilities	80%
Priority #5	Proper Waste Utilization (Poultry Waste Producers) Incentive Payments for Proper Utilization Components:	(1) Poultry waste used on producer's farm	6¢/lb P
		(2) Poultry waste off farm but in the Honey Creek Watershed	8¢/lb P
		(3) Poultry waste moved out of the Honey Creek Watershed into a non-phosphorus threatened or NLW watershed (cannot be moved into Eucha/Spavinaw, Grand Lake, Wister, or Illinois Watersheds)	15¢/lb P
Priority #6	Heavy Use Areas Components:	(1) Concrete pads	75%
		(2) Gravel	75%
		(3) Geotextile fabric	75%
		(4) Grading and shaping	75%
		(5) Terracells	75%
Priority #7	Rural Waste Septic Systems (Human Waste) Components:	(1) Septic systems with tank; pump out (when needed); installation; percolation test; lateral lines	80%
		(2) Soil profiling	90%

III. Conservation Cost-Share Practice Standards Specifications:

Cost-Share practices shall be implemented according to the standards and specifications of the Natural Resources Conservation Service. See Natural Resources Conservation Service Standards and Specifications in the Field Office Tech Guide, Section IV. The Department of Environmental Quality Bulletin 640, Special Qualification Guidelines for Septic Systems, contains the information for septic systems.

IV. Description of Approved Priority Practices

Riparian Areas and Buffer Zones—Establishment/Management (priorities 1 and 2)

Definition

Riparian areas are the lands adjacent to water bodies—from creeks and rivers to lakes, ponds, and wetlands. Riparian areas consist of trees, trees and shrubs, or trees, shrubs and non-woody vegetation. Buffer zones are strips or small areas of land in permanent vegetation adjacent to water sources or field edges.

Purpose

Reduce excess amounts of sediment, organic material, nutrients, pesticides and pathogens in surface runoff and shallow water flow.

Establishment

The riparian areas and buffer zones will be planned and designed according to NRCS specifications. The conservation water quality planner representing the local districts will complete the plan.

Management

The conservation planner will make recommendations to the applicant on management according to NRCS specifications. As a part of the management, exclusion incentives will be offered as follows:

Total Exclusion	\$50.00/acre/yr. for 4 years*
** Hay Production	\$45.00/acre/yr. for 4 years*
***Limited Grazing	\$40.00/acre/yr. for 4 years*

*These exclusion incentives are 100%. **Hay can only be accomplished in Zone 3 of the riparian area as determined by the conservation planner. ***The grazing periods will be determined by the conservation planner using NRCS standards. These exclusion incentives will be limited to no more than an average of 150' on each side of the stream bank. To qualify for these incentive payments, one or more practices to improve water quality must be completed and certified by the project coordinator.

Best Management Practices

Off-site watering facilities, riparian fencing, pasture establishment, forest buffer establishment, critical area improvements.

Composters, Cake-Out, and Cleanout Storage Buildings and Waste Storage/Animal Feeding Facilities (priority 3)

Definition

Construction of composters, cake-out and cleanout storage buildings to store dead poultry (and aid in the decomposition process) and litter until it can be spread onto fields as designated in a waste management plan. Also, construction of animal waste/animal feeding facilities for winter feeding, especially cattle, and storage of waste until weather and soil conditions are acceptable for spreading of the waste.

Purpose

To address the proper disposal of dead animals (poultry) and proper storage of animal waste, as well as to enable winter feeding of animals in a manner that will reduce the potential for erosion and manure associated with the soil around the feeding area.

Establishment

The composter, cake-out, and cleanout structures will be constructed pursuant to NRCS specifications. The waste storage/animal feeding facility will be constructed pursuant to the specifications used in the Beaty Creek and Spavinaw Creek 319 water quality projects.

Pastureland Establishment/Management (priority 4)

Definition

The proper care and maintenance of pastureland.

Purpose

This priority is aimed at pastures that have been overgrazed or degraded. These pastures need aid in the regeneration of a proper stand and the means to maintain them.

Best Management Practices

Pasture establishment, cross fencing, nutrient management, pest management, water well, pipeline, watering facilities, and heavy use area protection are needed on these pastures.

Proper Waste Utilization (priority 5)

Purpose

To insure proper application of animal waste and not to exceed the phosphorus level as established by NRCS and the application plan developed by a nutrient management specialist.

Best Management Practices

An animal waste management plan will be required, along with soil and litter analyses.

Heavy Use Areas (priority 6)

Definition

The stabilization of areas frequently and intensively used by animals. This is accomplished by establishing vegetation, surfacing with suitable materials, and/or installing needed structures.

Purpose

This practice is used as part of a conservation management system to support the following practices: improve water and air quality, reduce erosion, improve livestock health.

Human Waste Management (priority 7)

Purpose

To insure that rural residents have adequate means of disposing of human waste.

Components

Excavation, septic tanks, lateral lines, percolation tests, or soil profiling components may be necessary for the safe disposal of human waste.

Qualifications Criteria for Septic Systems

Cost-Share assistance for septic systems will be allowed only for non-commercial single family dwellings that are used for permanent and primary residence. The dwelling must be within 1,000 feet of drainage into a tributary of Honey Creek. The cost-share funds can not be spent on new homes or new mobile homes. Recreational trailers are not eligible for cost-share assistance.

V. Honey Creek Watershed Components Parts List

1. Use Exclusion-472

Definition

The management practice of excluding animals, people, or vehicles from an area.

Purposes

This practice aids in prevention of access to an area to maintain or improve the quality or quantity of natural resources.

Components

The practice requires fences or other natural barriers along with an alternate watering source or limited access watering site.

2. Pond-378

Definition

A water impoundment made by constructing a dam or an embankment or by excavating a pit or dugout.

Purposes

Ponds are used to provide water for livestock, fish, wildlife, recreation, fire control, crop and orchard spraying, and other related uses to maintain or improve water quality.

Components

Excavation or embankment, barrel and/or riser, blanket material, trash guard, and clay liners are needed for a pond.

3. Pipeline-516

Definition

The pipeline is a means of conveying water in a closed conduit to an alternate site. The pipeline must have an inside diameter of 8” or less.

Purposes

Pipelines are used to convey water from a source of supply to points of use for livestock, wildlife, or recreation.

Components

The practice requires pipe (steel or plastic) that meets the NRCS requirements, a trencher, and a water supply.

4. Water Well-642

Definition

A hole that is drilled, dug, driven, bored, or otherwise constructed to an aquifer.

Purposes

The wells provide water for livestock, wildlife, and humans to facilitate proper use of vegetation on pastures.

Components

Water wells require excavation, drilling, casing, and wellhead protection.

5. Trough or Tank-614

Definition

A tank or trough (with needed devices for water control and waste) installed to provide drinking water for livestock.

Purposes

A tank is installed to provide watering facilities for livestock that will protect vegetative cover and eliminate the need for livestock to be in streams.

Components

These watering facilities need concrete, water tank, freeze proof hydrants or other water sources and are used in conjunction with heavy use areas (561).

6. Solar Pump/Windmill-533

Definition

A pumping facility installed to transfer water for a conservation need.

Purpose

Provide a dependable water source for water management for livestock.

Components

These pumping facilities require a storage tank capable of storing water for three days per animal unit. Quotes for electrical hook-ups and the pumping facility must

be obtained prior to installation and the lesser amount will be utilized.

7. Fence-382

Definition

A constructed barrier to exclude livestock, wildlife, or people or to provide for rotational grazing of livestock.

Purposes

Fencing is used as part of a conservation management system to aid in treatment of water and other resource concerns.

Components

The proper height, size, spacing, and type of posts should be used to provide the needed protection for the task. Labor, posts, wire, and other equipment are needed to construct this practice.

8. Pasture and Hay Planting-512

Definition

The establishment of native or introduced forage species.

Purposes

This practice may be used as part of a conservation management system to accomplish one or more of the following: reduce soil erosion by wind and water, provide complimentary forage to improve or maintain livestock nutrition or health, and or provide emergency forage production.

Components

The practice needs one or more of the following parts: grass sprigging and/or planting, seed bed preparation, nutrient management, and/or seeding of other grass species.

9. Field Border-386

Definition

A strip of permanent vegetation established at the edge or around the perimeter of a field.

Purposes

A field border assists in reducing erosion from wind and water. They also provide turn and travel areas for equipment at the edge of fields.

Components

Seed bed preparations, nutrient management, pest management, and grass planting are needed for this practice.

10. Riparian Forest Buffer-391

Definition

An area of predominantly trees and/or shrubs located adjacent to and up-gradient from watercourses or water bodies.

Purposes

These buffers reduce sediment and nutrient loading in watercourses. They also create shade to lower water temperatures to improve the habitat for aquatic organisms.

Components

Seed bed preparation, grass planting, tree and shrub planting, nutrient management, and pest management are necessary for establishment.

11. Stream bank and Shoreline Protection

Definition

The structural and managerial treatment used to protect banks of streams, constructed channels, and lakes.

Purposes

The practice is used in preventing the loss of land and improving water quality by reducing erosion and run off.

Components

The practice calls for vegetative planting (grasses, trees, and or shrubs), and/or structural practices.

12. Filter Strip-393

Definition

A strip of vegetation established between cropland, grazing land, or disturbed areas and the streams and water sources.

Purposes

Filter strips reduce sediment, nutrients, and other pollutants from reaching our water sources.

Components

Seed bed preparation, nutrient management, pest management, grass and shrub planting are necessary for filter strips.

13. Tree/Shrub Establishment-612

Definition

The establishment of woody plants by planting seedlings or cuttings, direct seeding, or natural regeneration.

Purposes

The establishment of the woody plants provides for long term erosion control, filter pollutants from run off, provide for wildlife habitat, and improve water quality.

Components

Tree/shrub establishment calls for correct planting dates for seeds or seedlings, exclusion of livestock to allow for growth, and site preparation.

14. Grade Stabilization Structure-410

Definition

A structure used to control the grade and head cutting in natural or artificial channels.

Purposes

The structures are used to stabilize the grade and control erosion in channels to prevent the advance of gullies and enhance the water quality.

Components

Grade stabilization structures require excavation, concrete, drop pipes, vegetative establishment, and or embankment practices.

15. Grassed Waterway-412

Definition

A natural or constructed channel that is shaped or graded to required dimensions and established with suitable vegetation.

Purposes

This practice is applied as part of a conservation management system to support the following: to convey runoff from terraces without causing erosion, reduce gully erosion, and to protect/improve water quality.

Components

Construction/shaping, seed bed preparation, nutrient management, pest management, and grass planting are needed for a waterway.

16. Lined Waterway or Outlet-468

Definition

A waterway or outlet with a erosion resistant lining of concrete, stone, or other permanent material.

Purposes

These provide for safe disposal of runoff from other conservation structures or natural concentrations of flow without damage from erosion.

Components

Construction and/or shaping, concrete, forms, and grass planting are necessary for a lined waterway or outlet.

17. Critical Area Planting-342

Definition

The planting of vegetation, such as trees, shrubs, vines, grasses, or legumes on highly erodible or critically eroding area.

Purposes

This is used to stabilize the soil, reduce damage from sediment and runoff to downstream areas.

Components

Seedbed preparation, nutrient management, mulching, pest management, grass planting, tree and shrub planting, lime are needed for the practice.

18. Composters/Animal Waste Storage Facilities-313

Definition

A waste storage impoundment made by fabricating a structure.

Purposes

To temporarily store wastes such as manure, wastewater and contaminated runoff as a storage function component of an agricultural waste management system.

Components

Construction and/or shaping, concrete, forms, rebar, trusses, sheet metal. NRCS specifications will be followed on all composters, cake-out and cleanout structures. Specifications provided by the Project Coordinator will be followed for animal waste/ animal feeding facilities

19. Proper Waste Utilization-633

Definition

Using agricultural waste such as poultry litter and cattle manure.

Purposes

Protect water and air quality. Provide fertility for crop, forage, fiber production and forest products. Improve or maintain soil structure. Provide a source of energy.

Components

Soil and waste analysis are required prior to removal and application of waste from storage site. An animal waste management plan shall be followed for any application of waste.

20. Heavy Use Area Protection-561

Definition

The stabilization of areas frequently and intensively used by animals. This is accomplished by establishing vegetation, surfacing with suitable materials, and/or installing needed structures.

Purposes

This practice is used as part of a conservation management system to support the following practices: Improve water and air quality, reduce erosion, improve livestock health.

Components

The components needed for this practice include: vegetative establishment, structural practices, and/or installation of materials such as geotextile, geocell, concrete, and/or rock.

21. Septic Systems

Definition

An on-site system designed to treat and dispose of domestic sewage. A typical septic system consists of a tank that receives waste from a residence or business and a drain field or subsurface absorption system consisting of a series of percolation lines for the disposal of the liquid effluent. Solids (sludge) that remain after decomposition by bacteria in the tank must be pumped out periodically.

Purposes

To insure that rural residents have adequate means of disposing of human waste.

Components

The necessities for septic systems are: Septic tank, lateral lines, rock/reed fields, and/or residential sewer lagoons. The septic systems will be designed according to Department of Environmental Quality (DEQ) bulletin 640-Special Qualification Guidelines for Septic Systems.

22. Nutrient Management-590

Definition

The management of the amount, source, placement, form and timing of the application of nutrients and soil amendments.

Purposes

Nutrient management minimizes non-point source pollution of surface and ground water by efficiently monitoring vegetative needs. It improves the physical, chemical, and biological condition of soil.

Components

The practice calls for soil sampling, maintaining records, fertilizer and/or lime applications, and management of crop removals.

23. Prescribed Grazing-528a

Definition

The proper treatment and use of pastureland.

Purposes

This practice enhances the prolonged life of desirable species to aid in protection of the soil and production of livestock. This reduction in erosion improves water quality and lowers sediment deposits.

Components

This practice requires establishment of forages, management of grazing practices, nutrient management, and/or cross fencing.

24. Pest Management-595

Definition

The management of agricultural pest infestations to reduce adverse effects on plants, animals, and the environmental resources.

Purposes

The practice develops a management program that is both environmentally acceptable and economically sound.

Components

This practice involves the minimal acceptable elements of cultural, biological, and chemical controls that still maintain a sustainable system.

25. Wildlife Habitat Management

Definition

Provide and manage upland habitats and connectivity within the landscape for wildlife.

Purposes

To treat wildlife habitat concerns identified during the conservation planning process that enables movement, or provides shelter, cover and food in proper amounts, locations and times to sustain wild animals that inhabit uplands during a portion of their life cycle.

Components

Components that may be included, but not required, are fencing, tree/shrub establishment, brush management, riparian forest buffer, prescribed grazing, use exclusion, and forest stand improvement.

VI. Honey Creek Watershed Load Reductions

Signup for implementation of BMPs is ongoing. Once landowner signup is completed, expected loads reductions will be estimated using the PRedICT model and the SWAT model.

Checklist of Procedures for Implementation

1. Open Application Period.
2. Keep list of all applications received.
3. Water Quality representatives will determine eligibility, complete farm visits, and prepare a Priority Ranking sheet on each applicant.
4. Develop a case file on each applicant. (Refer to Case File Checklist)
Note: If and when the applicant is approved for funding and the conservation plan is developed, all items in the case file should be placed in the cooperators' plan file.
5. After all evaluations have been completed, the water quality representatives will rank all applicants. These rankings will be based on the priority ranking criteria set in the Honey Creek State Guidelines.
6. Successful applicants will be notified and a Performance Agreement will be signed by applicant, district board, and OCC Water Quality Representative. Note: Absolutely no work can begin or materials purchased by any applicant until all three signatures have been obtained on the Performance Agreement.
7. Conservation plans will be developed on all approved applicants using the NRCS Customer Service Toolkit or a comparable program. Three copies of the conservation plan will be made with the landowner receiving one copy and the Water Quality Representative retaining two copies (one copy will be kept at the representative's office with the other going to the Oklahoma Conservation Commission WQ office).
8. Arrangements are then made for the designated NRCS and/or OCC Water Quality Representatives to design the approved conservation practices.
9. Certify work is complete and authorize payment through the Conservation Commission. The notarized cost-share payment claim must be accompanied by a copy of all invoices, Performance Agreement, Consent Form (if applicable), Certification of Completion and Acceptance, Cost-Share Payment Calculation Sheet, the cooperators' Schedule of Operations, and a completed Vendor Form. These will be forwarded to OCC for payment.
10. Upon receipt of payment from OCC, the district will obtain the signature of the participant on the Release of Warrant Form and place in the conservation plan case file. The disbursement of the funds to the cooperators will be completed to finalize the procedure.
11. Annual Status Reviews will be performed up to two months before and no later than the anniversary of the completion date for the practice.

Case File Checklist

1. Application for allocated funds
2. Copy of Priority Ranking sheet
3. Property map, soils map and soil technical descriptions
4. Farmer-Rancher Conservation Agreement with DCCD
5. Performance Agreement and any amendments
6. Schedule of Operations and any amendments
7. Completed Cultural Resources documentation
8. Vendor form
9. Maintenance Agreement and any amendments
10. Complete copies of all claims and certifications sent to OCC for processing
11. Copies of all vouchers and cost-share payment checks
12. Consent Form, if applicable
13. Release of Warrant Form
14. Any correspondence to and from the participant
15. Any note of relevant conversations with the participant
16. Applicable NRCS standards and specifications
17. Annual Status Reviews

Note: These items can be placed in the conservation plan folder in the district/project office after preparation of the plan.

HONEY CREEK 319 NON-POINT PRIORITY WATERSHED		
PRIORITY RANKING SYSTEM 2006		
Producer:		Total Acres:
Legal:	Section _____ Township _____ Range _____	Total Points:
Water Quality- High Potential Phosphorus Loss on Targeted Riparian Area and Grazing Lands (Maximum Total: 100 pts)		
	Poor Condition Pastures as identified on Target Maps (20 pts)	
	High Potential Phosphorus Loss areas identified on Target Maps (20 pts)	
	Medium Potential Phosphorus Loss areas identified on Target Maps (15 pts)	
	Low Potential Phosphorus Loss areas identified on Target Maps (10 pts)	
	Land offered will apply a Comprehensive Nutrient Management Plan if applying poultry litter according to an animal waste management plan. (20 pts)	
	Distance from confined livestock facility to USGS Blue Line Stream or other water body. Adjacent (15pts) <1/4 mile (10pts) 1/4-1/2 mile (5pts) >1/2 mile (0pts)	
	General topography between confined livestock facility and USGS Blue line or Water Body. >8% slope (10pts) 3% - 8% slope (5pts) 0% - 3% slope (0pts)	
	319 Project application will develop filter strips for the entire length of land that is adjacent to streams and lakes in offered land units (15pts)	
Plant Condition- Productivity, Health and Vigor (Maximum Total: 20 pts)		
Offer includes implementation of Prescribed Grazing (528A) system that balances forage production with livestock numbers for the period of the contract.		
	% of the grazing lands in the operating unit planned for implementation of Prescribed Grazing according to the (528A) standard during the contract period. 100% (10pts) 50%-99% (5pts) <49% (0pts)	
	Practice(s) will facilitate improved grazing distribution. (382, 614, 642, 378) (5pts)	
	Grazing system rotates through 3 or more pastures per grazing season. 3-5 (1pts) 6/7 (3pts) 8 or more (5pts)	
Rural Waste On-site Disposal Systems - Rural Septic System Concerns (Total: 100 pts)		
	Offer includes replacement of existing septic system by installation of 1,000 gallon tank, lateral lines, percolation test, and DEQ permit (100pts)	
		Total Evaluation Points:
This form will be used to determine priorities for planning and fund distribution. The applicants with the highest number of points, as determined by the planner, will be the first priority for planning and fund allocation.		